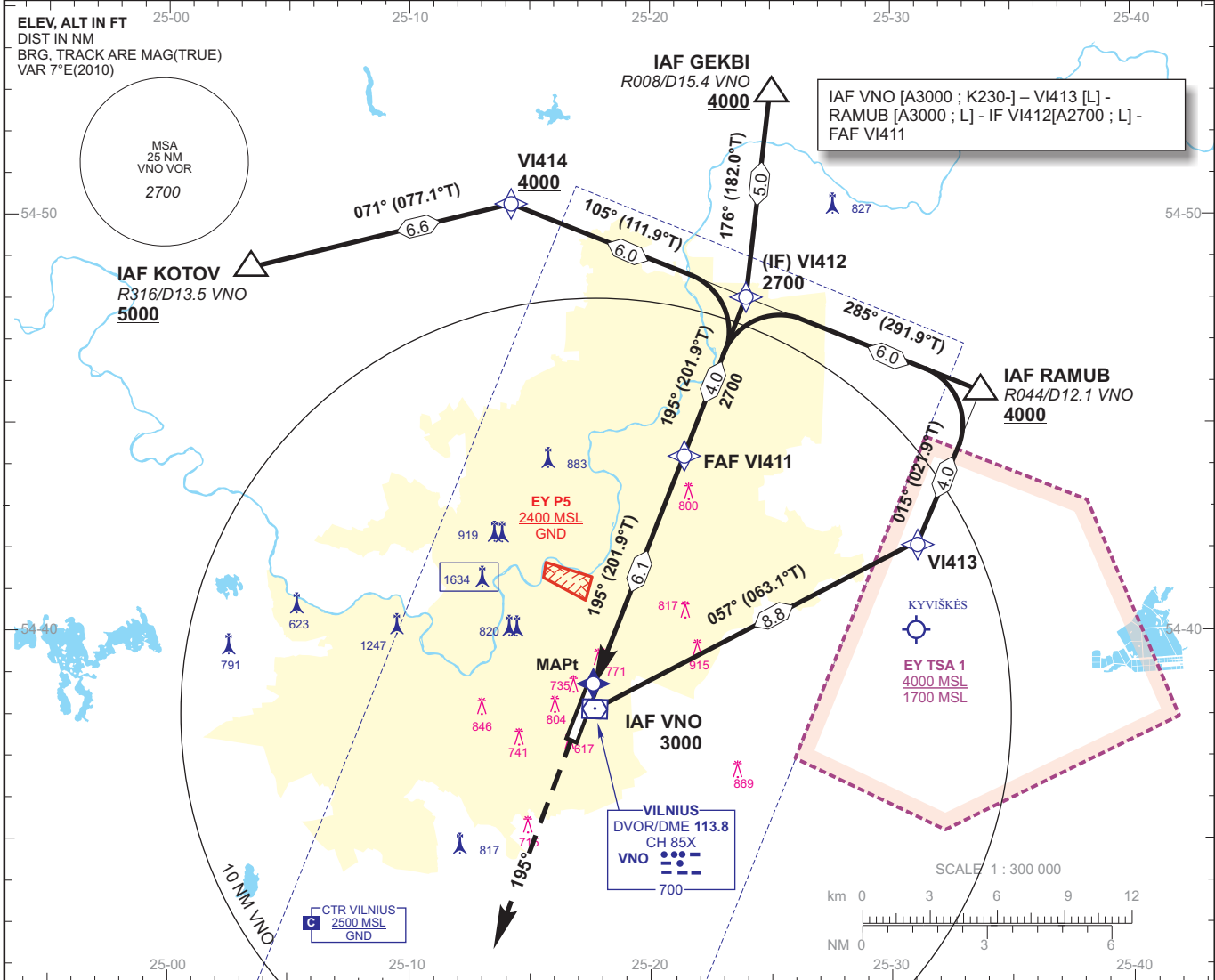


INSTRUMENT APPROACH
CHART - ICAO

AERODROME ELEV 646
HEIGHTS RELATED TO
THR RWY 20-ELEV 646

APPROACH 120.700
TOWER 118.200
ATIS 125.800

**VILNIUS / INTL
LITHUANIA**
RNAV (GNSS) RWY 20



TRANSITION ALTITUDE 5000

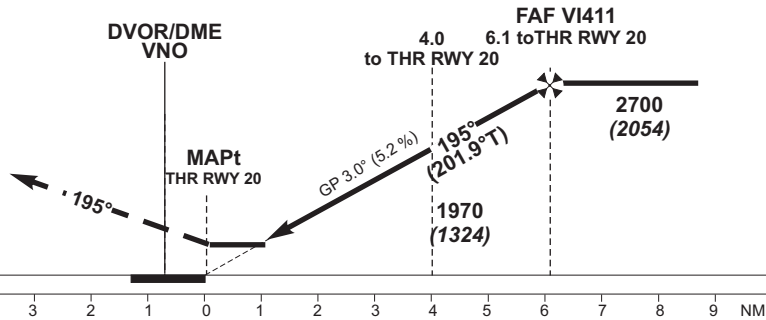
MISSED APPROACH PROCEDURE (NON RNAV)

Climb on track 195° to 3000, radar vectoring will be provided

In case of RCF climb on track 195° to reach 2700 at 9 NM VNO, then turn right to VNO climb to 4000.

THR ELEV 646

NM to/from THR RWY 20



FIX/POINTS COORDINATES

| | | | | | |
|----------|-------------|-------------|--------|--------------|--------------|
| VI411FAF | 54 44 20.5N | 25 21 31.1E | VNO | 54 38 09.8N | 25 17 37.1E |
| VI412 IF | 54 48 02.7N | 25 24 06.2E | THR 20 | 54 38 40.73N | 25 17 34.99E |
| VI413 | 54 42 06.8N | 25 31 07.3E | | | |
| VI414 | 54 50 15.9N | 25 14 28.1E | | | |
| GEKBI | 54 53 01.4N | 25 24 24.6E | | | |
| KOTOV | 54 48 48.5N | 25 03 25.3E | | | |
| RAMUB | 54 45 48.8N | 25 33 43.2E | | | |

| DIST THR RWY 20 | 6 | 5 | 4 | 3 | 2 | | |
|------------------------|---------|--------|--------|--------|-------|------|------|
| Altitude | 2610 | 2290 | 1970 | 1650 | 1330 | | |
| Height | (1964) | (1644) | (1324) | (1004) | (684) | | |
| GS | Kts | 80 | 100 | 120 | 140 | 160 | 180 |
| FAF - THR 20(6.1 NM) | min:sec | 4:35 | 3:40 | 3:03 | 2:37 | 2:17 | 2:02 |
| Rate of descent (5.2%) | ft/min | 415 | 520 | 625 | 730 | 835 | 940 |

| OCA(H) | A | B | C | D |
|----------------------|------|------------|---|---|
| STRAIGHT-IN APPROACH | LNAV | 1080 (434) | | |

Remarks:
Timing not authorized for defining the MAPt

Changes: in profile view FAF VI601 changed to FAF VI411.